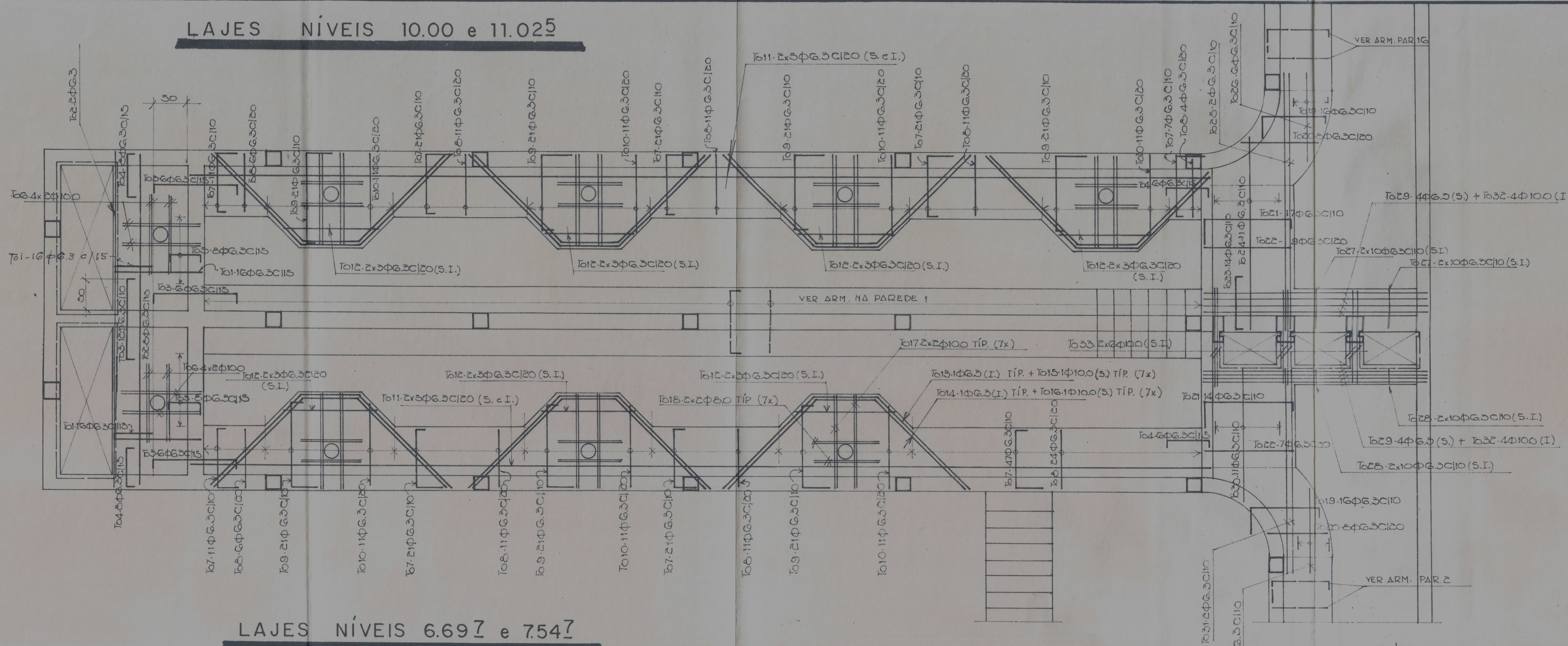
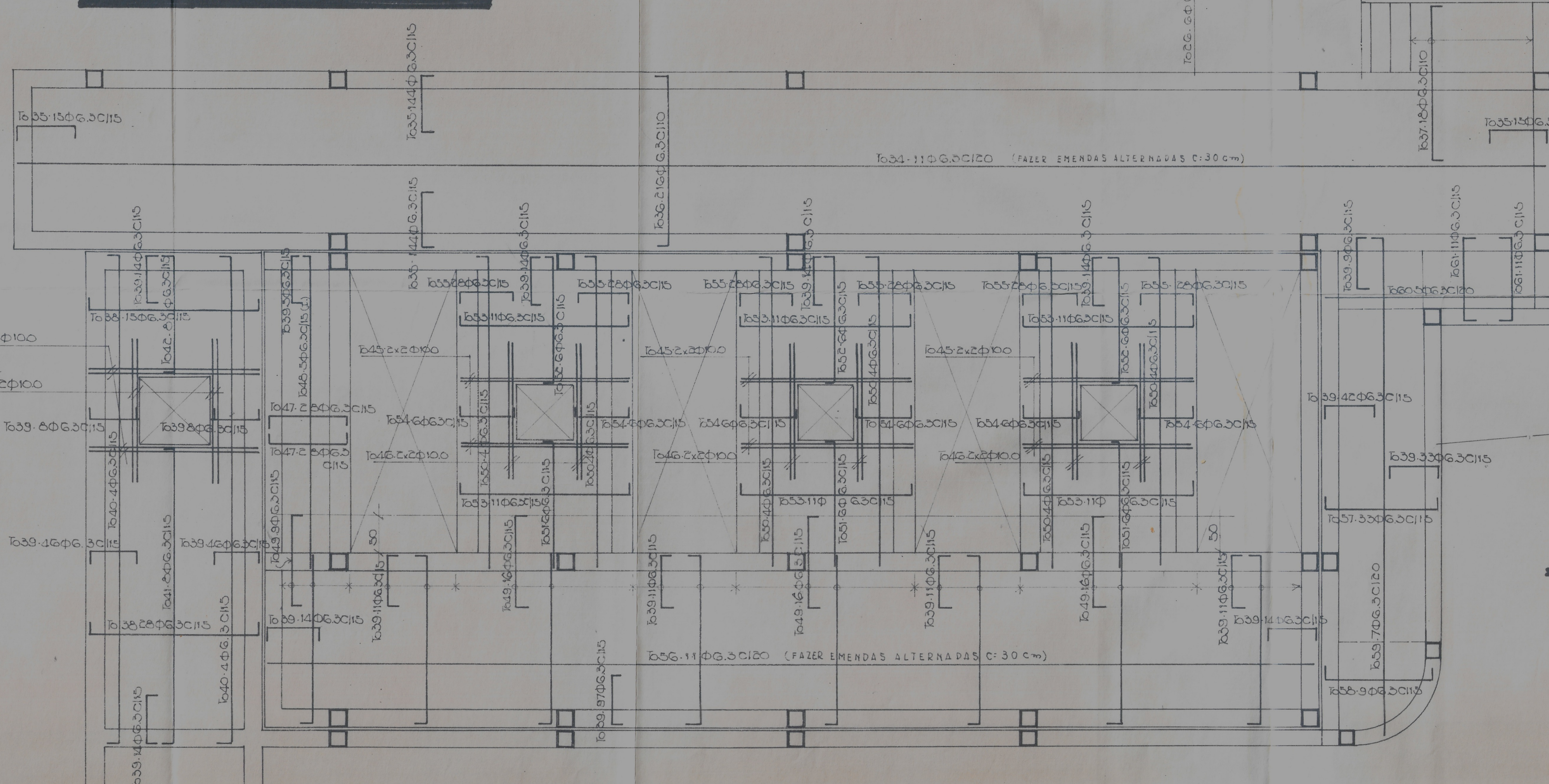


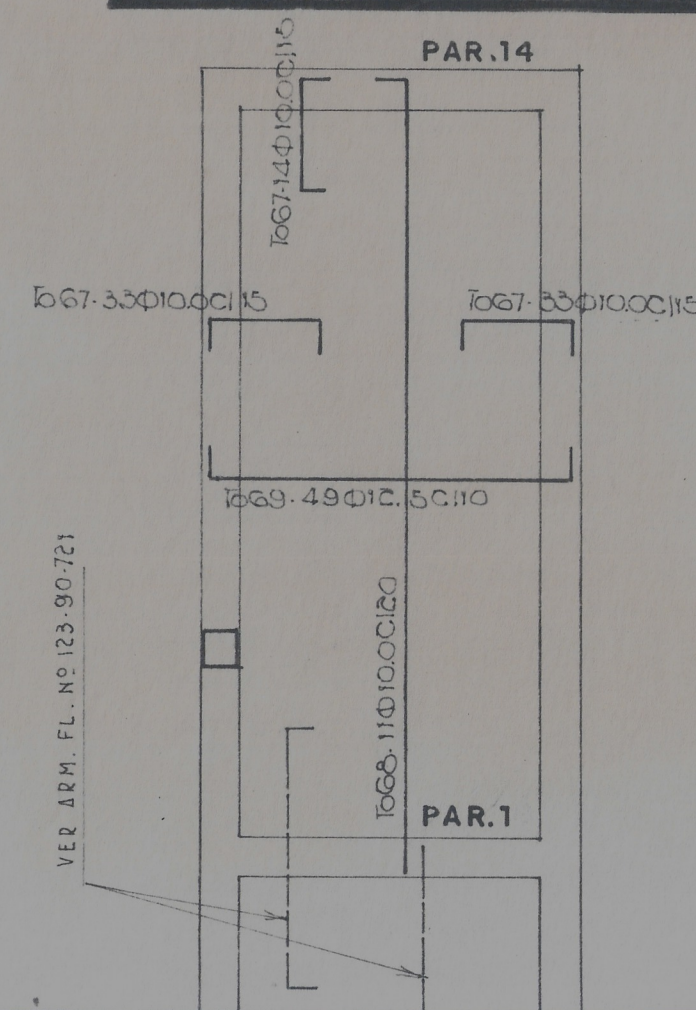
LAJES NÍVEIS 10.00 e 11.025



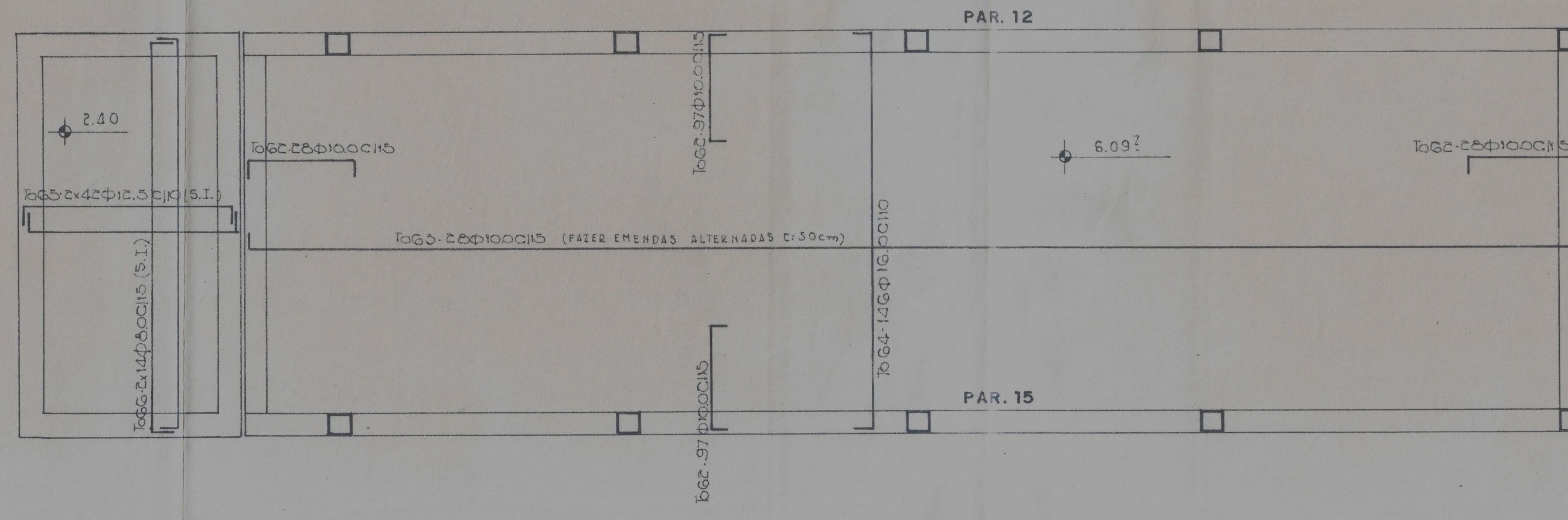
LAJES NÍVEIS 6.697 e 7.547



LAJE NÍVEL 6.097 (ENTRE PAR. 14 e 15)



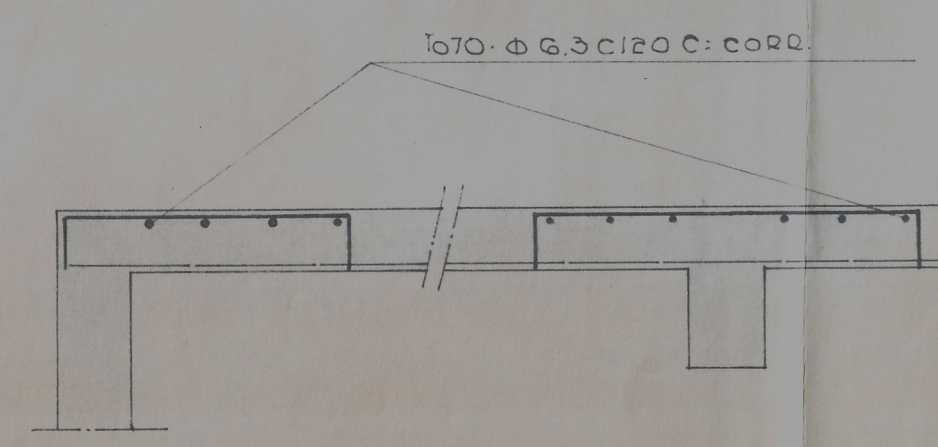
LAJES NÍVEIS 2.40 e 6.097 (ENTRE PAR. 12 e 15)



To	Ø	DOBRAMENTO	C	N	C x N	
1	6.3	5	140	1.97	28	63.04
2	11			3.33	10	33.30
3	11	9	125	1.43	30	42.90
4	11	9	75	.90	20	25.20
5	11	9	55	.75	16	11.68
6	10.0			1.20	16	19.20
7	6.3	9	99	1.48	18	26.76
8	11			.99	15	14.85
9	11	9	VAR	VAR	14	24.08
10	11			VAR	77	88.55
11	11			CORR	20	22.50
12	11			VAR	42	63.00
13	11	205	35	5.05	7	35.35
14	11	197	91	1.97	42	82.95
15	10.0	205	35	5.05	7	35.35
16	11	197	91	1.97	42	82.95
17	11			1.49	28	41.72
18	8.0			1.00	28	28.00
19	6.3	40	VAR	VAR	32	52.48
20	11			VAR	32	36.80
21	11	40	159	1.88	31	58.28
22	11			1.39	16	22.24
23	11	9	82	1.00	14	14.00
24	11			VAR	11	33.55
25	11			4.25	2	8.70
26	11			VAR	12	16.00
27	11	9	59	.77	40	30.80
28	11	9	20	.38	40	15.20
29	11	9	347	3.65	8	29.20
30	11			VAR	11	23.10
31	11			3.30	2	6.60
32	10.0	9	347	3.65	8	29.20
33	11	9	138	1.56	12	18.72
34	6.3			CORR	11	24.795
35	11	6	77	.89	318	283.02

36	6.3	6	222	2.94	216	370.24
37	11	6	224	3.00	18	45.00
38	11	9	244	3.26	45	112.65
39	11	9	72	.90	40	36.00
40	11	9	705	7.65	8	57.40
41	11	9	427	4.45	8	35.60
42	11	9	172	1.80	6	13.20
43	10.0			2.44	4	9.76
44	11			2.00	4	8.00
45	11			2.42	12	29.04
46	11			1.80	12	21.60
47	6.3	9	116	1.34	56	75.04
48	11			4.69	3	14.07
49	11	9	125	1.43	55	78.65
50	11			4.39	24	105.36
51	11			1.82	18	32.76
52	11	4	182	1.93	18	34.74
53	11	9	242	2.60	66	171.60
54	11	9	78	.81	36	32.76
55	11	9	68	.76	168	144.48
56	11			CORR	11	16.73
57	11	9	172	1.80	33	64.02
58	11	9	VAR	VAR	9	12.96
59	11			VAR	7	51.03
60	11			3.29	5	16.45
61	11	9	125	1.43	22	31.46
62	10.0	14	122	1.50	250	375.00
63	11	14	CORR	CORR	28	440.44
64	16.0	14	450	4.78	146	697.88
65	12.5	19	244	2.62	84	236.28
66	8.0	19	450	4.88	28	136.64
67	10.0	9	72	.90	80	72.00
68	11			5.29	9	59.18
69	12.5	9	244	2.62	49	128.38
70	6.3		DISTR.	CORR	1	6.45.00

DET. TÍPICO DE DISTRIBUIÇÃO NOS NEGATIVOS



Ø (mm)	kg/m	COMPR. (m)	PESO (kg)
6,3	0,25	7377,12	184,4
8	0,40	104,64	42
10	0,62	1193,16	740
12,5	0,97	365,28	354
16	1,58	697,88	1103
20	2,47		
PESO TOTAL			4107

REV. Nº	DESCRIÇÃO	DATA	APROV.
<b>SECRETARIA DO DESENVOLVIMENTO URBANO E MEIO AMBIENTE - SDU</b>			
<b>PROGRAMA SANEFOR</b>			
<b>CONSÓRCIO CONCREMAT/CSL/CAB</b>			
SISTEMA DE POSIÇÃO OCEÂNICA DE ESGOTOS DE FORTALEZA EPC - ESTAÇÃO DE PRÉ-CONDICIONAMENTO			DOC. Nº
<b>PENEIRAS</b>			123-90-725A
ARMAÇÃO: LAJES			
PROJETISTA:	TOPÓGRAFO:	DESENHISTA:	ESCALA:
RESP. TÉCNICO	CONFERÊNCIA:	APROVAÇÃO:	DATA:
		P. Signi	1:50
			06/94

VER ARM. PL. Nº 123-90/721